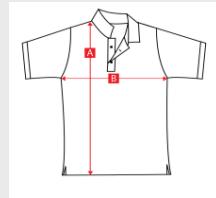


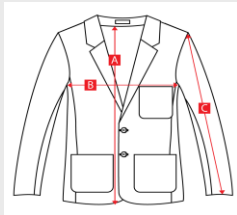
### UNISEX POLOSHIRT

Order size	20"	22/24"	26"	28"	30"	32"	XS 34"	S 34/36"	M 38/40"	L 42/44"	XL 46/48"	XXL 50/52"
Garment length (cm) - measure A	43	48	51	53.5	58.5	61.5	65.5	68	70.5	75	78.5	78.5
Garment chest (cm) - measure B	30	33	35.5	38	40.5	43	46	48.5	53.5	58.5	63.5	68.5



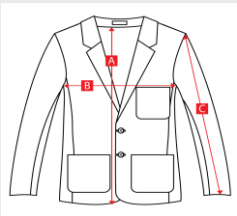
### GIRL FIT POLOSHIRT

Order size	20"	22"	24"	26"	28"	30"	32"	XS 34"	S 36"	M 38"	L 40"	XL 42"	XXL 44"
Garment length (cm) - measure A	43.5	46	48.5	51	53.5	56	59.5	61.5	63	64	67	68.5	70
Garment chest (cm) - measure B	30	33	34	35	37	39	42	44	47	50	52	54	56



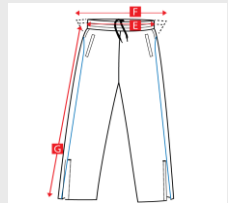
### GIRLS BLAZER

Order size	24"	26"	28"	30"	32"	34"	36"	38"	40"	42"	44"	46"	48"	50"	52"	54"
Garment length (cm) - measure A	47.5	52.5	57	62	65	68.5	71	72.5	73.5	75	75	76	76	76	76	76
Garment chest (cm) - measure B	35.5	38	40.5	43	47	49.5	52	54.5	57	59.5	62	65	67.5	70	72.5	75
Garment arm length (cm) - measure C	43	48	51	54.5	58.5	61	63	63	64	65	65.5	66.5	66.5	67	68.5	69.5



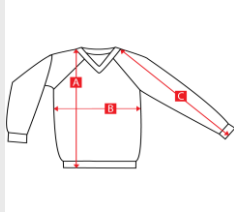
### BOYS BLAZER

Order size	24"	26"	28"	30"	32"	34"	36"	38"	40"	42"	44"	46"	48"	50"	52"	54"
Garment length (cm) - measure A	47.5	52.5	57	62	67.5	71	73.5	75	76	77.5	78	78	78	78	78	79
Garment chest (cm) - measure B	35.5	38	40.5	43	46	48	51	53.5	56	58.5	61	63.5	66	68.5	71	73.5
Garment arm length (cm) - measure C	44	48	51	55	59	61	63	65	66	66	67	67	68.5	69.5	71	72



### TRACKSUIT BOTTOMS

Order size	3/4yr	5/6yr	7/8yr	9/10yr	11/12yr	13yr	S	M	L	XL	XXL
Waist width (cm) - relaxed - measure E	23.5	26	28.5	31	33	35.5	38	40.5	43	45.5	48
Waist width (cm) - fully extended - measure F	36	39	40	44	46	48	51	54	57	59	62
Outside leg length (cm) - measure G	61	72	76	83	89	96	101	103	106	109	110



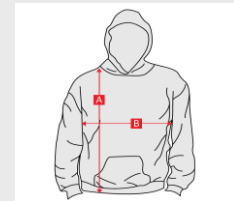
### V NECK KNITTED SWEATER

Order size	22"	24"	26"	28"	30"	32"	34"	36"	38"	40"	42"	44"	46"	48"	50"
Garment length (cm) - measure A	47	49.5	53	55	58	62	66	67.5	69	71	73	74	74	76	76
Garment chest (cm) - measure B	31.5	34	37	39.5	42	46	50	52.5	54.5	57	59.5	62	64.5	67	69.5
Garment arm length (cm) - measure C*	56	59	65	69	75	79	85	86	87	88	91.5	94.5	97.5	98.5	98.5



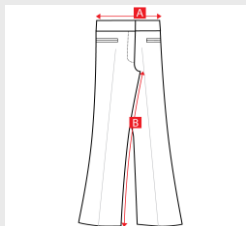
### SHORTS MICROFIBRE

Order size	3/4yr 20"	5/6yr 22"	7/8yr 24"	9/10yr 26"	11/12yr 28"	13yr 30"	S 32"	M 34"	L 36"	XL 38"
Waist width (cm) - relaxed - measure E	24	26	28	30.5	32	34.5	37	39.5	41	42.5
Waist width (cm) - fully extended - measure F	34	36	39	43	46	47	49	54	56	57



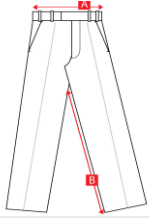
### HOODIE COTTON/POLY

Order size	3/4yr	5/6yr	7/8yr	9/11yr	12/13yr	XS	S	M	L	XL	XXL
Garment length (cm) - measure A	44	48	52	57	62	64	67	70	73	76	79
Garment chest (cm) - measure B	39	41	43	46	49	49	51	56	61	65	69



### GIRLS TROUSERS

Order size	22"	24"	26"	28"	30"	32"	34"	36"	38"	40"
Waist width (cm) - relaxed - measure A	28	30.5	33	35.5	38	40.5	43	45.5	48	50.5
Inside leg Lengths Available - measure B										
19"/74cm	Y	Y	Y	Y	Y	Y	Y	Y	Y	Y
31"/79cm	Y	Y	Y	Y	Y	Y	Y	Y	Y	Y
33"/84cm	Y	Y	Y	Y	Y	Y	Y	Y	Y	Y



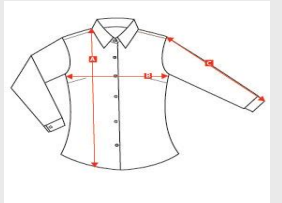
## BOYS TROUSERS

Order size	24"	26"	28"	30"	32"	34"	36"	38"	40"	42"	44"
Waist width (cm) - relaxed - measure A	31.75	34.5	37	39.5	42	44.5	47	49.5	52	54.5	57
Inside leg Lengths Available - measure B											
Short 30"/76cm	n/a	n/a	n/a	Y	Y	Y	Y	Y	n/a	n/a	n/a
Regular 32"/81cm	Y	Y	Y	Y	Y	Y	Y	Y	Y	n/a	n/a
Long 34"/86cm	n/a		Y	Y	Y	Y	Y	Y	Y	n/a	n/a



## BOYS SHIRT - LONG or SHORT SLEEVE

Order Size	11"	11.5"	12"	12.5"	13"	13.5"	14"	14.5"	15"	15.5"	16"	16.5"	17"			
Garment chest (cm) - measure B	34.2	35.5	38	40.5	43	45.7	48.2	52	54.5	57	58.5	61	63.5			
Garment length (cm) - measure A	47	52	54.5	61	65	67.5	70	75	78	79.5	82.5	84.5	86.5			
Garment sleeve overarm long sleeve (cm) - measure C	54	58	64	68	72	75.5	80	82	84.5	86	87.5	87.5	89			
Garment sleeve overarm short sleeve (cm) - measure C	16.5	18	19	20	21.5	23	24	25.5	26.5	28	28	29	30			



## GIRLS BLOUSE - LONG or SHORT SLEEVE

Order Size	24"	26"	28"	30"	32"	34"	36"	38"	40"	42"	44"	46"			
Garment chest (cm) - measure B	34.5	37	39.5	42	44.5	47	49.5	52	54.5	57	59.5	62			
Garment length (cm) - measure A	48	50	55	59	61	64	67	71	73	73	73	74			
Garment sleeve overarm long sleeve (cm) - measure C	41.5	44	46.5	51.5	55	58	60	61	62	63	64	65.5			
Garment sleeve overarm short sleeve (cm) - measure C	16	17	18	19	20	21	22	23	24	25	26	27			

### Sizing Specifications

The measurements given are the measurements of the actual garment in that size.

To decide which size to order we suggest you take a garment that currently fits and take the measurements as shown on the diagrams.

Compare these with the sizing chart to see which size matches closest and, of course, you should allow room or growth.

Please note however that, as with all garment specifications, the garment may be 2cm larger or smaller than indicated.